

Web Community Manager 2.16 Release Notes

New or Changed Functionality or User Experience


GENERAL

Community Engagement Resource Center (CERC)

In October we launched a new [Community Engagement Resource Center \(CERC\)](#) that provides access to a robust [Help Center](#) and many other resources for the K-12 Community Engagement Solution—built with Blackboard’s Web Community Manager.


Explore CERC on your own using custom searches and *clicking around*. If you prefer you can follow the path through Web Community Manager or follow the Mobile, Notifications and Social path for information about these Blackboard K-12 solutions.

What You'll Find Here




[Help Center](#) >

Whether you're a teacher working in Web Community Manager or a parent looking for your child's grades on your Mobile Communications App, we're here to help.




[Creative](#) >

From stunning, responsive Made to Order Templates to easy-to-use Design Ready Templates, our Creative Team can help you find the right fit for your website.



[Training](#) >

Our trainers deliver online and onsite training and consulting services for all the products in the K-12 CE Solution. They are committed to your success.



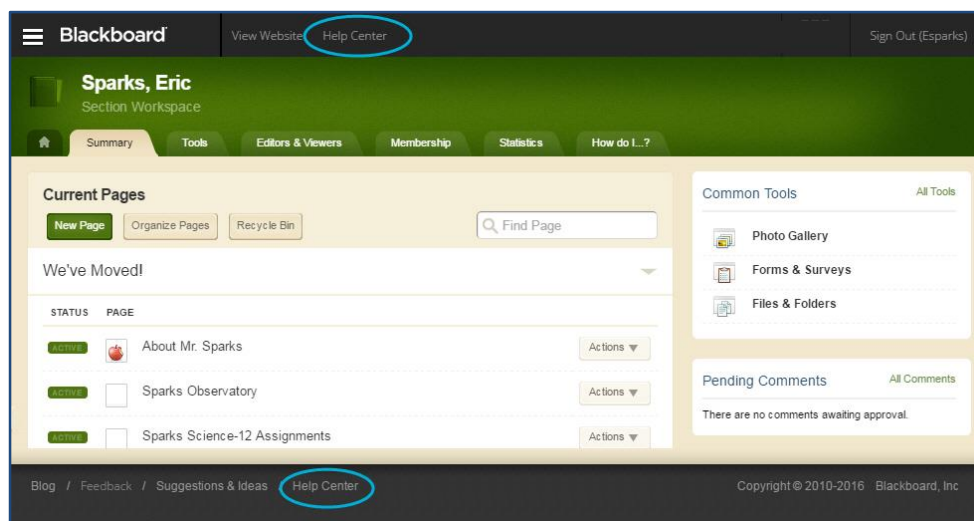
[Release Information](#) >

As we continue to innovate and integrate the products in our K-12 Community Engagement Solution, it's imperative that we keep you informed.

CERC Help Center Access

Use the friendly web address cerc.blackboard.com/websitehelp to access the Web Community Manager Help Center on CERC.

When in Site Manager, you can click the *Help Center* link located in either the title bar or footer.




Web Community Manager 2.16 Release Notes

WORKSPACES

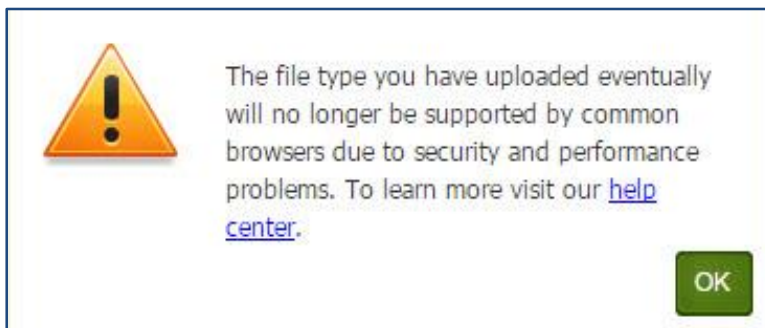
File Types

As you may be aware, common browsers such as [Mozilla® Firefox®](#) and [Google Chrome™](#) are phasing out the use of Adobe® Flash® due to security and performance issues. As a result, with the release of Web Community Manager 2.16, the types of files you can use when adding episodes to Podcast Apps has changed. The file types you can use when you insert Rich Media in the Flex Editor and the Classic Article Library and Headlines & Features Apps has also changed.

Media File or Web Address:

 You can upload MP3, MP4 and M4A files. To learn more visit our [help center](#).

When adding new content, you can only use **MP3**, **MP4** and **M4A** files. When editing existing content with file types other than MP3, MP4 and M4A, you are cautioned that common browsers will eventually stop supporting these file types. We recommend that you upgrade your files to ones that are supported.



Web Community Manager 2.16 Release Notes

Insert Link Wizard



The Insert Link Wizard has been updated. The Web Address field no longer includes the protocol drop-down list (http://, https://, etc.). Remember to enter a fully qualified web address when entered content into this field.

You'll also find a new text field, *Text to Display*. Enter the text that you wish to display in lieu of the actual web address. If you first highlight text before you click the Insert Link Icon, the text highlighted populates this field.

A screenshot of the 'Insert Link' dialog box. On the left, there is a list of options: 'Your Site', 'Email Address', 'Web Address', and 'Bookmark'. 'Web Address' is selected and highlighted in blue. On the right, there are three input fields: 'Web Address' with the value 'http://cerc.blackboard.com', 'Text to Display' with the value 'Community Engagement', and 'Target' with a dropdown menu set to 'Open in New Window (_blank)'. At the bottom, there are 'Insert Link' and 'Cancel' buttons.

Insert File Wizard



The Insert File Wizard has been updated. You'll find a new text field, *Text to Display*. Enter the text into this field that you wish to display for the file link on the end user website. If you first highlight text before you click the Insert File Icon, the text highlighted populates this field.

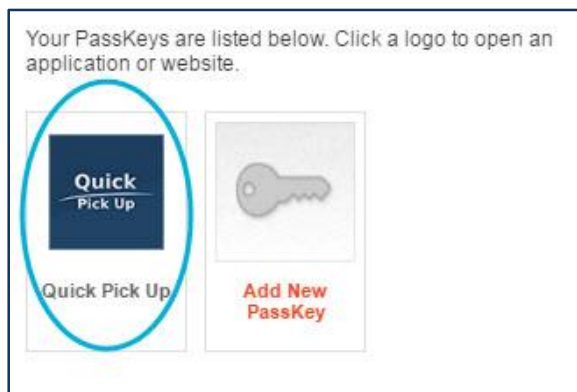
A screenshot of the 'Insert File' dialog box. It features a 'Link Attributes' section with two input fields: 'Text to Display' with the value 'Contest Rules 2017' and 'Target' with a dropdown menu set to 'None'. At the bottom, there are 'Insert File' and 'Cancel' buttons.

Web Community Manager 2.16 Release Notes

END USER

MyAccount—PassKeys

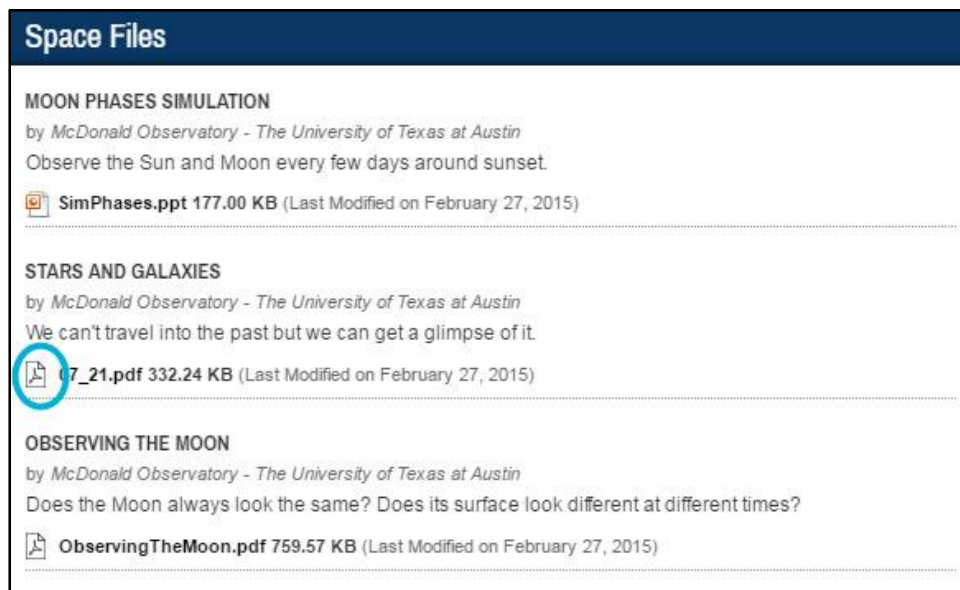
A new PassKey had been included in the PassKey Library, Quick Pick Up.



This PassKey provides single sign on access to the Quick Pick Up app—a multi-platform solution that makes your school’s pick up process much safer, smarter and faster.

New End User Icons

You’ll see new icons for PDF files in the File Library App.



Web Community Manager 2.16 Release Notes

You'll see new icons in the Wiki App.

Space & Climate Wiki

Scientists Discover How Events in Space Effect Climate on Earth

Follow this link to [WashingtonBlog](#) and read the post. There are several key points emphasized—let's research and expand these points.

INTENSE SOLAR ACTIVITY CAN DESTROY OZONE AND AFFECT CLIMATIC TEMPERATURES

As ozone absorbs electromagnetic radiation, changes in ozone concentrations alter Earth's radiative balance by modifying both incoming solar radiation and outgoing radiation. In this way, ozone controls solar energy deposition in the stratosphere and its variations alter the thermal structure of the stratosphere. These changes are assumed to propagate downward through a chain of feedbacks involving thermal and dynamical processes.

Unlock Edit Delete

New Posting

You'll see new icons in the Calendar App.

Happy Valley School District ▶ Happy Valley School District Calendar

Customize Calendar View

November 2016

Today Day Week Month List

My Events Export iCal

November 2016

Sun	Mon	Tue	Wed	Thu	Fri	Sat
		1	2	3	4 Parent Teac... Parent Teac...	5
6	7	8 8:00am District Sch...	9	10	11 6:30pm HWHS Bask...	12
13	14	15	16 9:00am SAT Works...	17 1:00pm SAT Works...	18 6:30pm HWHS Bask...	19 9:00am SAT Exam Str...
20	21	22	23 Thanksgiving Break-Schools Closed	24	25	26 9:00am SAT Exam Str...
27	28 6:00pm School Boa...	29 6:30pm Understand...	30			

Web Community Manager 2.16 Release Notes

Resolved Issues

We have resolved the following issues in this release. We've listed the issues as they were originally entered.

<i>Functional Area</i>	<i>Subject</i>
Accessibility	Accessibility - Sitemap search input needs descriptive title for form field
Accessibility	Accessibility - Skip navigation doesn't take user to the beginning of the calendar event detail
Accessibility	Accessibility - Skip navigation doesn't take user to the beginning channel directory page
Accessibility	Accessibility - Skip navigation does not work on the sitemap
Accessibility	Accessibility - Page title does not exist for event detail
Accessibility	Accessibility - Survey logo does not have alternative text
Files & Folders	Files and Folders - If long list of files and select one on the bottom to delete, have to scroll down to the bottom of the page to get dialog box
Forms & Surveys	Forms/Surveys - after display message is deleted, saved it cannot be resaved
Forms & Surveys	Forms & Surveys - can inject spam responses into multiple choice questions
Headlines & Features	Headlines App Throwing "Oops! An error occurred while loading your content" when loading large amount of content
MiniBase	Minibase - When () is in field and a search is filtered on the field, all fields are returned in results
MiniBase	Minibase - Description does not show at end user
On Screen Alerts	On-screen alerts are not showing when assigned to the group All Registered Users
Page Names	Page Names with special characters cause apps on page to be un-editable after 2.15 update
PassKeys	Passkeys - Test Button - AWS clients receiving mixed content error
Photo Gallery	Photo Gallery - Unable to upload files with .JPG, JPEG, PNG or GIF extensions
School Directory	School Directory - Filtering is turned off when the More button is selected

Web Community Manager 2.16 Release Notes

<i>Functional Area</i>	<i>Subject</i>
School Directory App	School Directory App - Site URL No Longer Populating on Initial View Page
Section Workspace	Section Workspace - Chrome FF and IE - Site Manager scrolls to top of workspace when selecting Set Viewers
Shared Apps	Shared Apps - Improper deletion of apps
Site Search	Site Search - SSL Everywhere - receiving mixed content errors when search is set to Google Search
Staff Directory	Staff Directory - Sorting - Sort order incorrect
Template Configuration	Template Configuration Screen - An Ampersand Will Cause An Error Message if you try to use it in the template settings
Template Configuration	Only PNG images showing for Template Configuration Image picker
Template Configuration	Footer - Links are overlapping Schoolwires logo in some templates
TinyMCE Apps	TinyMCE - Image Borders Not Displaying Properly and Unable To Be Modified In Site Manager
TinyMCE Apps	Apps with TinyMCE - insert image wizard adds alt text and title. Edit image only edits alt text.
Universal Navigation	Universal Nav - If user does not have access to modify user accounts in WCM, PLUserID is set at 0
Upload Image	Upload image - no resize is scaling image down for images over 300 pixels high
User Import	Update Password - After user import or user update, user cannot change own password in MyAccount
Users Recycle Bin	Users Recycle Bin - Delete All not deleting 30 pages of users when deleting large number of pages of users
Users Recycle Bin	Users Recycle Bin - Delete by Group not deleting when group has large amount of users

Web Community Manager 2.16 Release Notes

Technical Requirements

Here are the [Web Community Manger End-User Technical Requirements](#).

Google Chrome and MS Edge do not support Netscape Plugin Application Programming Interface (NAAPI) plug-ins. This affects file types in Podcasts and Rich Media Objects that use the QuickTime player. We'll address these in future releases.

Refresh Your Cache

It's always a good practice to clear your browser cache on a regular basis. [Refresh your Cache](#) shows you how to clear your cache in any browser.

Resources and Materials on CERC

As always, you can find resources and materials related to this release as well as to the many features and functions on the [Community Engagement Resource Center \(CERC\)](#) website. [Core Resources](#), [Hot Help Topics](#), [Apps Showroom](#), [Training](#) and [Creative](#)—we've got the information you need to succeed with your Web Community Manager website.